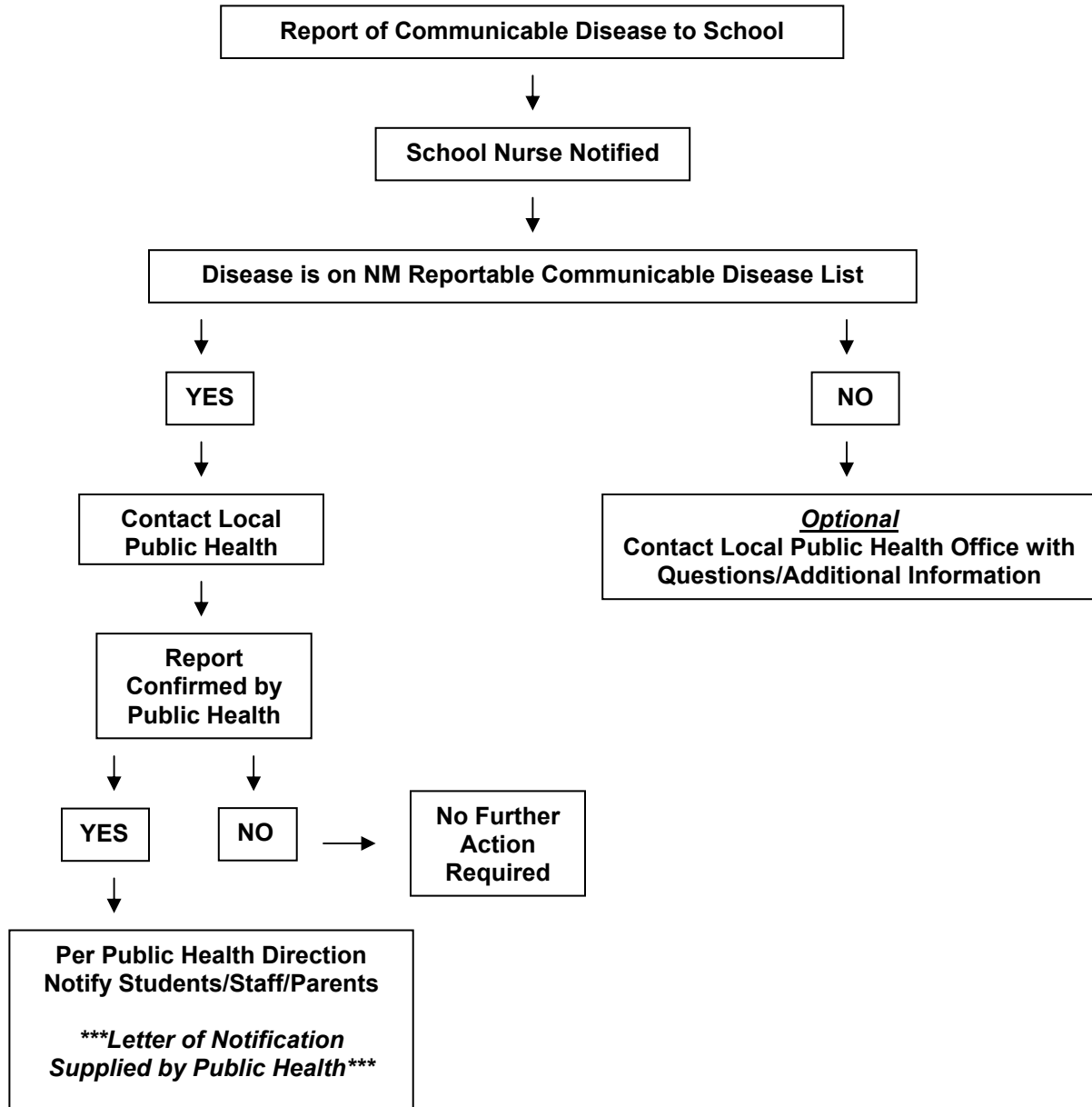


**REPORTABLE COMMUNICABLE DISEASE FOLLOW-UP ALGORITHM AND
NEW MEXICO DEPARTMENT OF HEALTH CONTACT LIST**



NEW MEXICO DEPARTMENT OF HEALTH CONTACT LIST			
State Epidemiologist: <u>(505) 827-0006</u>			
NM District Health Officers:	<u>(505) 841-4100</u>	Albuquerque	<u>(505) 476-2600</u> Santa Fe
	<u>(505) 528-5143</u>	Las Cruces	<u>(505) 347-2409</u> Roswell
Local Public Health Office: _____			